

**GEN 4 – REV C
LOCKER INSTALLATION MANUAL**

Locker Type	Model	Locker Type	Model
Main	A4B.E	4 Door	A4G.E
Add On	A4D.E	44 door	A4X.E
All Medium	A4E.E	All Small (w/4 med. doors)	A4M.E
Oversized	A4F.E	Custom Configuration	A4K.E

STEP 9: COMPLETE SELF-CONFIGURATION

22-23

Technical Support: **415-390-0123 x992**

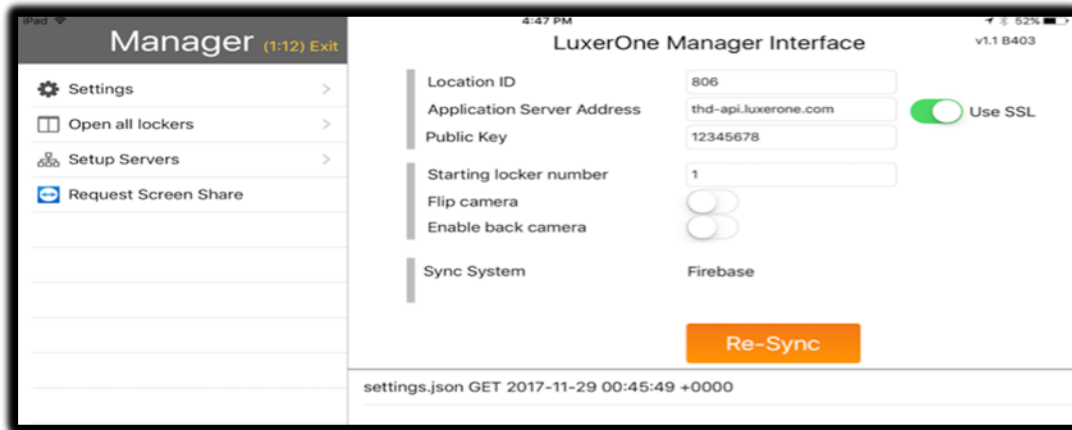
Step 9: Complete Self-Configuration

1. Start with all control boards unplugged from power, plug in only one at a time working left to right. Programming must be done in sequence.
2. The information below will all be populated on your touchscreen in the Luxer One App. If not contact support.

Location ID: Somewhere USA

Application Server Address: api2.luxerone.com

Public Key: 534453545



3. Select Resync button
4. Select "Set Up Servers"



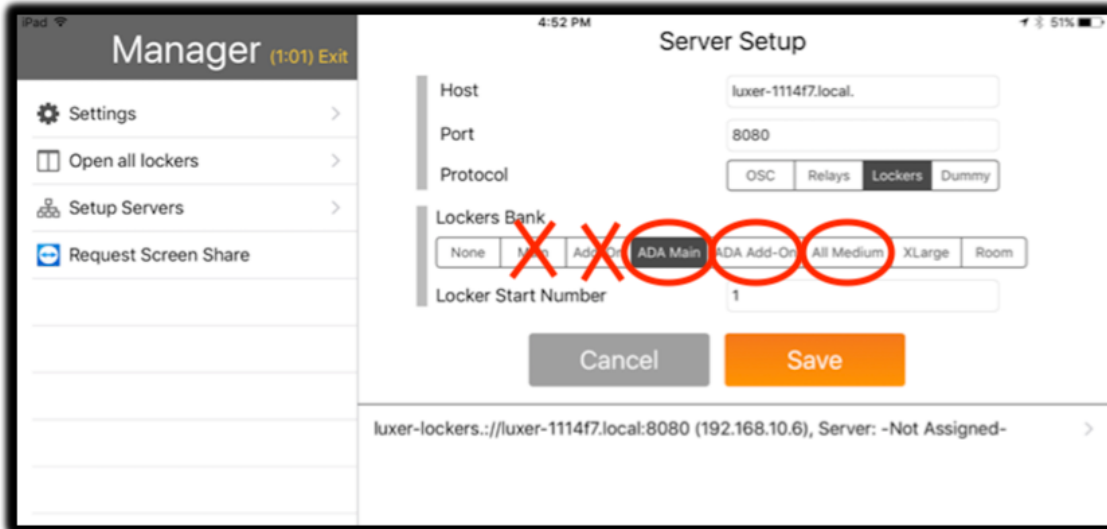
5. On the first bank of lockers starting left, plug the power into the control board. (Where door 1 will be)
6. Back out of Server settings and then click back in. May need to wait a few minutes for the board to be recognized.
7. luxer-lockers://... - Not Assigned- should appear on the bottom right. If it does not show up power cycle board.
8. Select the: luxer-lockers://... - Not Assigned-
9. Select "Add New" in top right
10. Under "Lockers Bank" select the type of locker bank the control board being set up is in. Leave all

other fields untouched.

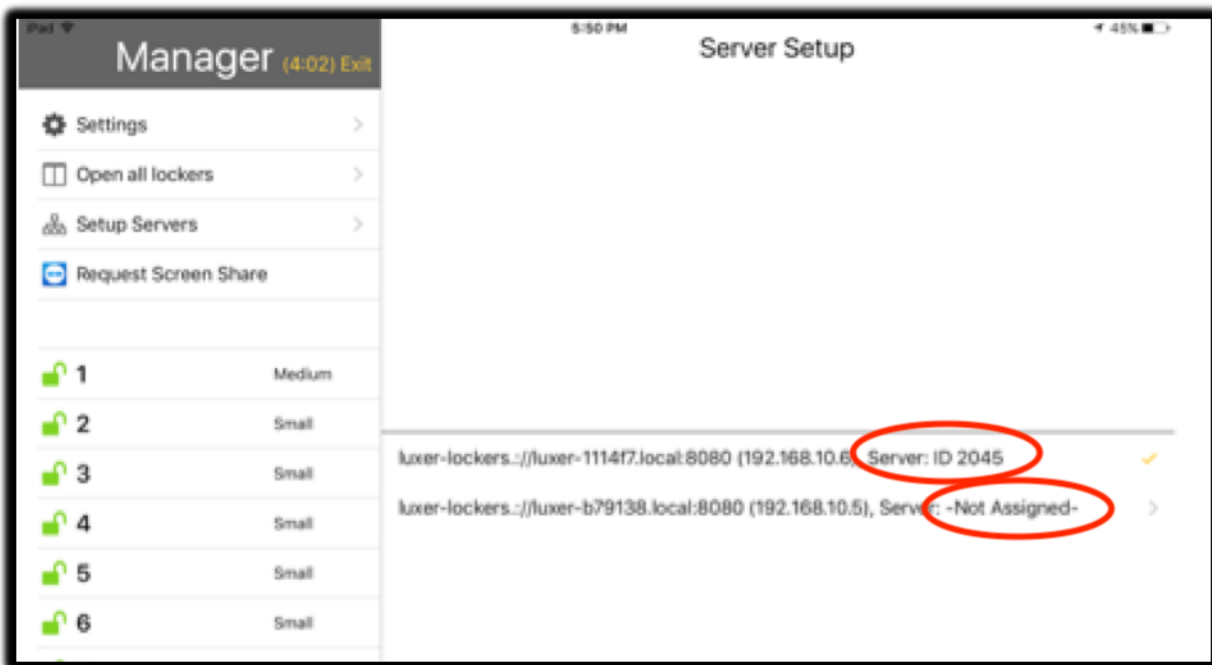
DO NOT USE the MAIN or ADD-ON options

Utilize the following:

- ADA Main** - Bank that holds screen
- ADA Add-on** - Bank that has 17 doors of varied size
- All Medium - Bank that has 14 doors of the same size
- All other locker types must be set up by calling into support.**



11. Select Save
12. Locker door numbers should populate on the left side after it saves. This control board is now setup.
13. Plug in the next board to the right and repeat steps 6-13 for each board in the system. The newest plugged in board should be the only one that ends in "Not Assigned", the ones that have been set up already will have a "Server:ID XXXX"



- After self-configuration contact Luxer One Support to wrap up camera aiming and any additional locker programming. 415-390-0123 x992