

**GEN 4 – REV C  
LOCKER INSTALLATION MANUAL**

Locker Type	Model	Locker Type	Model
Main	A4B.E	4 Door	A4G.E
Add On	A4D.E	44 door	A4X.E
All Medium	A4E.E	All Small (w/4 med. doors)	A4M.E
Oversized	A4F.E	Custom Configuration	A4K.E

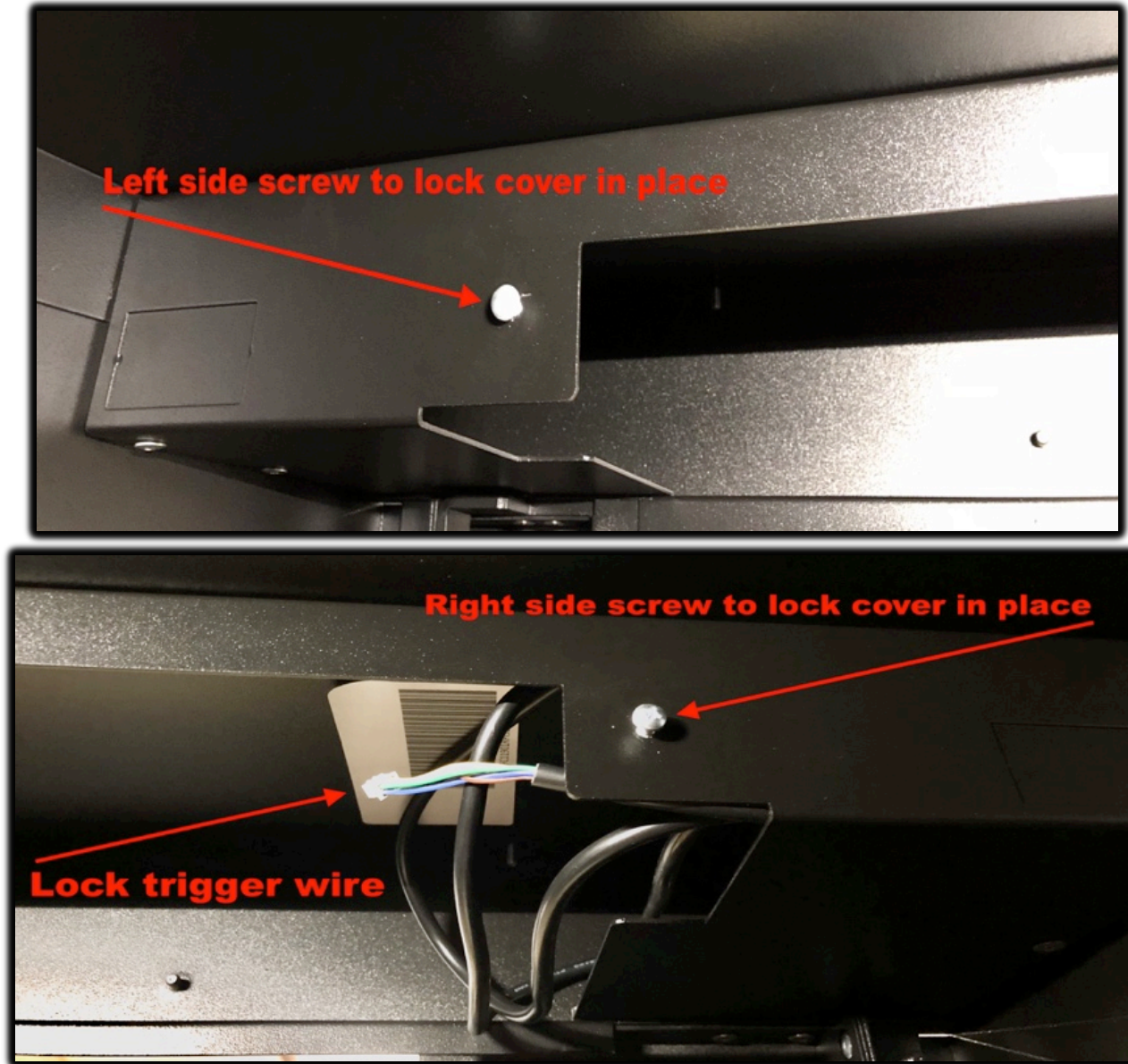
**STEP 6: OVERSIZED (XL) LOCKER ADDITIONS**

**18-20**

Technical Support: **415-390-0123 x992**

## Step 6: Oversized (XL) Locker Addition(s)

- Oversized lockers require a special wiring procedure.
- In the top ceiling of the oversized locker there is a removable cover. While inside the locker and looking out notice the ceiling plate above with two screws in it.
- While holding the ceiling plate, unscrew the two screws on this cover and slide out to reveal the lock trigger wire and LED bar.



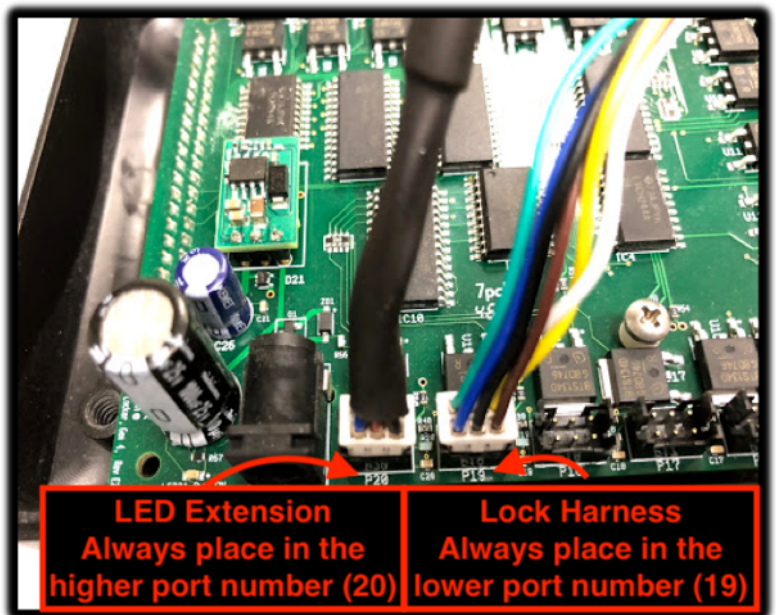
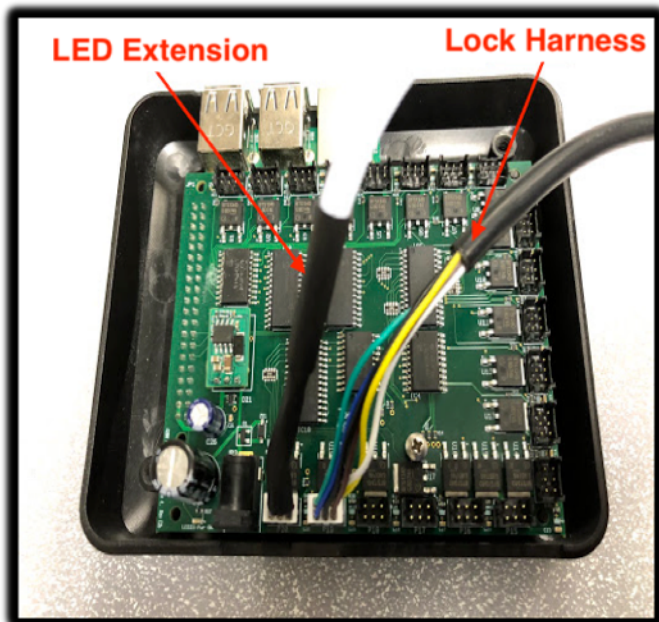
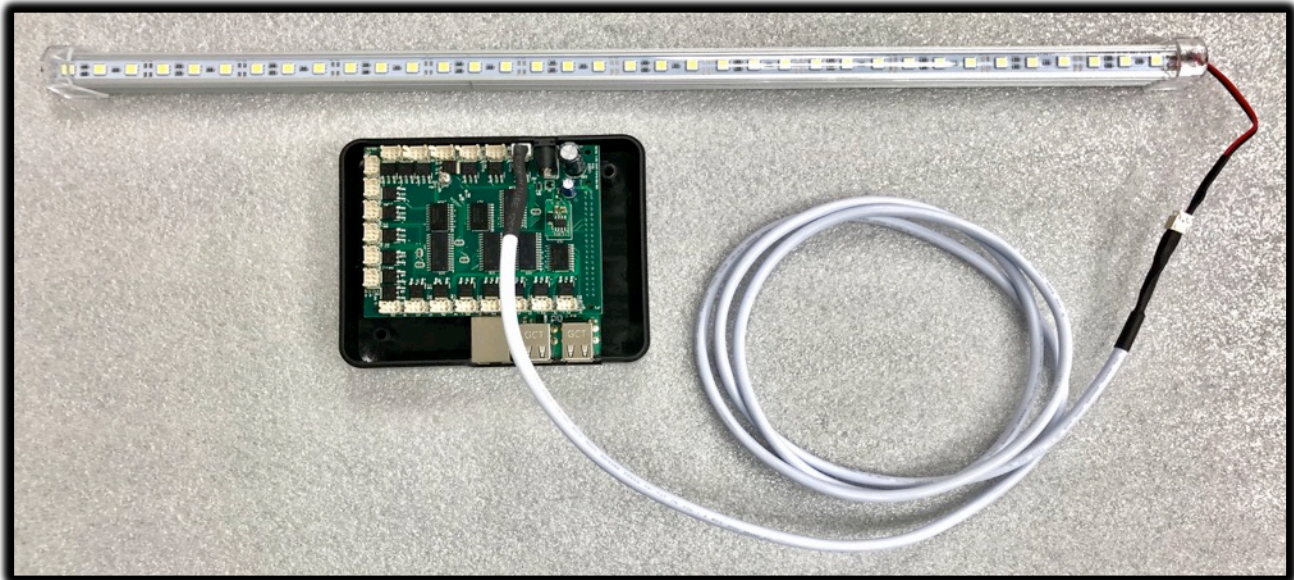
- Inside you will find an LED light bar that is pre-wired with a plug. This plug will mate up with one of our extension cables directly.
- Along with the lock harness route the extension connected to the LED bar to one of the lockers next to the XL. These will be plugged directly into the neighboring lockers control board on the last two ports.
- For installs with 2 or more XL lockers in a row a separate control board may be provided in the kit. This will ensure there are enough available ports for the XL lockers locks and LED lights. In these cases, this board can be stored in the ceiling of one of the XL lockers.

### Accessing the ports on a control board:

- This can be done without removing the control board if desired.
- Always use a hand screwdriver (Philips) to open and close the control board housings. The 2 screws will strip out if a drill is used.

### Connect Harness and Contact Support

- The lock harness needs to be plugged into an open port **FIRST**, then the LED bar extension.
  - Example: If ports #'s 19 & 20 are free, LOCK wire goes into #19 then the LED goes into #20
- When calling Luxer support to configure make sure to let them know the port numbers you have plugged the two lock extensions from the oversized locker into.



### Test:

- Once configured, test fire the door from the touchscreen interface to ensure it is lighting up when the locker is triggered.
- To re install the control board housing cover remove the screws before placing the top back on. This will allow the alignment of the screw holes instead of the screws getting in the way while trying to line up the top.

- Now place the housing over the board. Be careful not to force it or the connectors on the board could be damaged. Make sure all the wires are coming out of the side with the power port neatly. Always tighten these screws with a hand screwdriver otherwise the holes will be stripped out if a drill is used.

#### **XL floor panel:**

- The XL lockers have a two-piece floor panel. They will only fit in their respective place.
- There are two types of screws that secure these floor panels in place.
- The two small undercut screws (8/32" x 1/4") are specifically for the front two holes. These undercut screws will ensure that the opening and closing door will not scrape.
- The remaining six self-drilling screws (#10 x 5/8") go around the sides and the back.
- These are all stainless steel screws.



### **Step 7: Turn the Power On**

- **Before turning the system power on make sure that all control boards do not have the power cables plugged in. This is critical for the sequential self-programming process. Only plug the power into each control board when directed to individually in Step 9.**
- Once all the wires are run, turn the systems power on by holding down the button on the backup battery in the Main locker.

### **Step 8: Mount and Connect the Touchscreen**

- Unscrew the touchscreen housing nuts from the back of the door.
- Insert the touchscreen with power port on the left and camera on the right, when looking at the front of the screen. This means the Home button should be hidden on the left.
- Next Plug an Ethernet cable into an open port on the router or switch.
- Plug the other end of the Ethernet cable into the Ethernet to USB adapter
- Plug the Ethernet to USB adapter into the USB to lightning adapter.
- Plug USB to lightning adapter into the touchscreen
- **Plug the touchscreen charger into the backup side of Battery Backup (As shown in Step 3: Prepare the Main Unit)**
- Plug the touchscreen charging cable into the USB to lightning adapter

Touchscreen networking components list:

1. Touchscreen
2. Touchscreen charger and cable
3. Router
4. 3-foot Ethernet cable
5. USB to Ethernet adapter
6. USB to lightning adapter