

**GEN 4 – REV C  
LOCKER INSTALLATION MANUAL**

Locker Type	Model	Locker Type	Model
Main	A4B.E	4 Door	A4G.E
Add On	A4D.E	44 door	A4X.E
All Medium	A4E.E	All Small (w/4 med. doors)	A4M.E
Oversized	A4F.E	Custom Configuration	A4K.E

**STEP 13: INSTALL CAMERA(S)**

**32-40**

Technical Support: **415-390-0123 x992**

## Step 13: Install Camera(s)

Skip this step if there are no cameras

### Components:

- Power Adapter, Ethernet Coupler Seal, 15-foot Ethernet cable (not shown), 12-inch Ethernet cable, Anchors with Screws, T10 Torx Wrench, Template, and Camera.

### Tools Required:

- Drill, ¼ inch drill bit, Philips bit, and T10 torx bit (included with camera).

This camera will receive power through the Ethernet cable and the power adapter. Video will be transmitted through Wi-Fi. The camera will come pre-configured to connect to the sites Luxer One locker router. **(Reminder: This camera is not motorized and will require aiming.)**

### **Sites with Ethernet Pre-Wiring:**

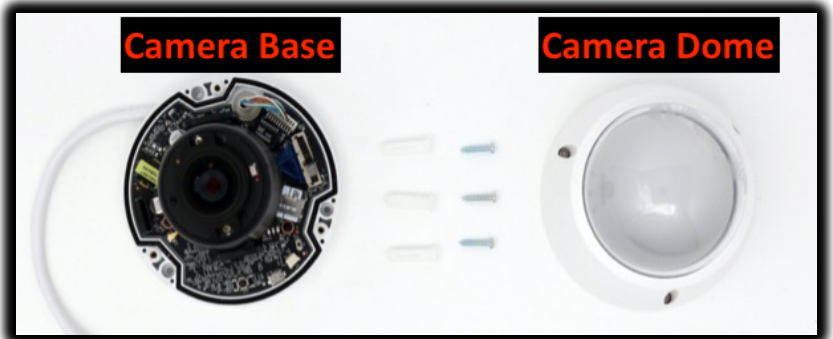
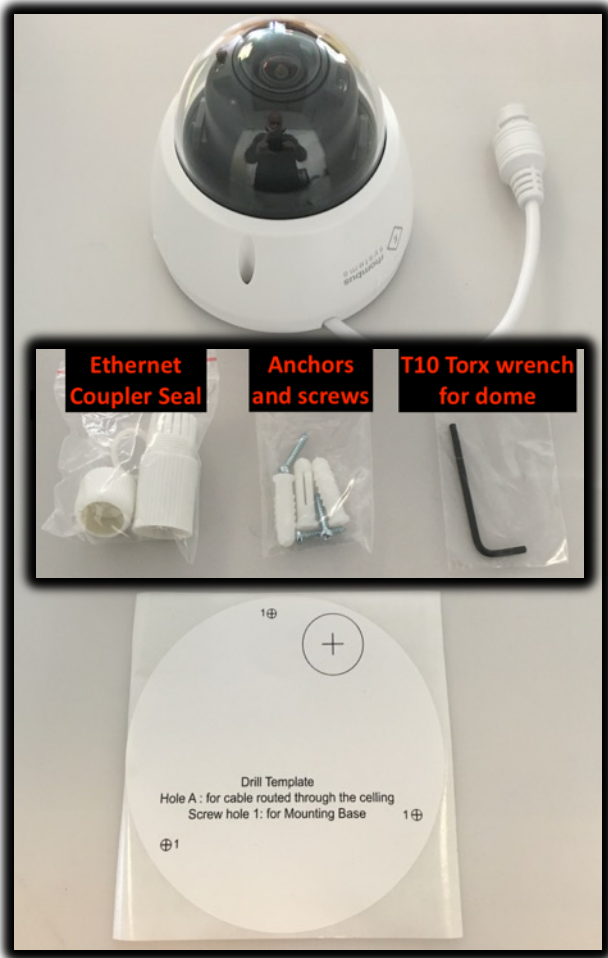
If your site is pre-wired with an Ethernet cable coming out of the ceiling, this will be plugged directly into the cameras Ethernet coupler and should be tucked into the ceiling under the mount. Utilize the template provided below.

You will need to identify the Ethernet ports at the Main locker that are wired to the cameras. Once identified use the 15-foot patch cable to run the Ethernet cable from the wall jack into the locker to connect the Camera power supply inside the control bay.

### **Sites with Power Outlet Pre-Wiring:**

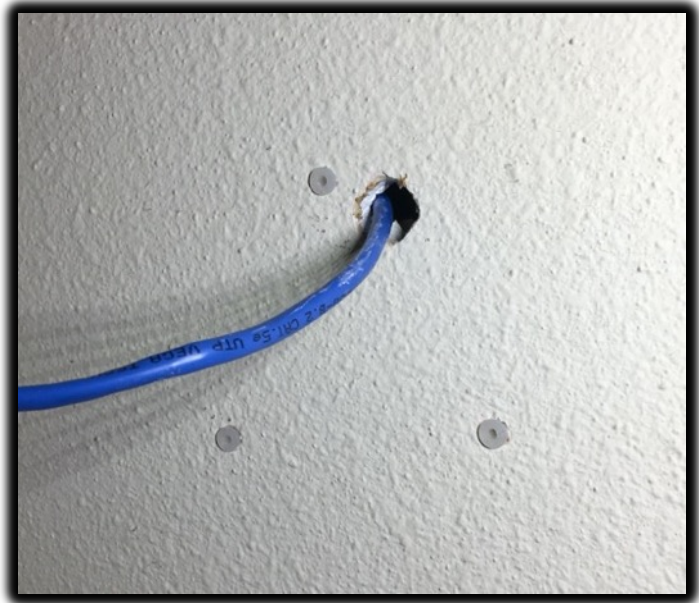
Some sites may still have power outlets for the camera and can still be connected the same way the prior camera series was connected. A special junction box will be provided that will hide the Ethernet coupler under the camera. **See the “For sites with Power outlet Pre-Wiring for Cameras” section.**

**Note: This camera should be mounted on the ceiling, to provide the cleanest mounting and wire management solution.** The image may need to be flipped within the software by Luxer One support.



### For sites with Ethernet Pre-wiring for Cameras:

- It is preferred that the camera be mounted to the ceiling when possible.
- It is important to ensure that the chosen location will allow for adequate video coverage as well.
- Use the template for marking the anchor holes and Ethernet routing.
- With a ¼ inch drill bit, drill the holes for the anchors and insert the anchors. (Anchors required on hollow wall or concrete surfaces)



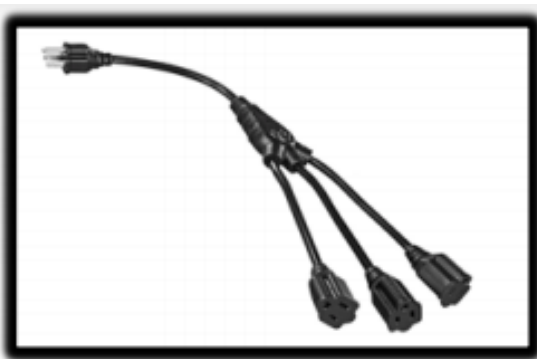
- Separate the camera base from the dome using the provided T10 Torx wrench.
- Once separated connect the Ethernet cable from the ceiling to the cameras Ethernet coupler as shown. Tuck the coupler into the ceiling.



- Complete base mounting with the supplied screws and re-install the dome



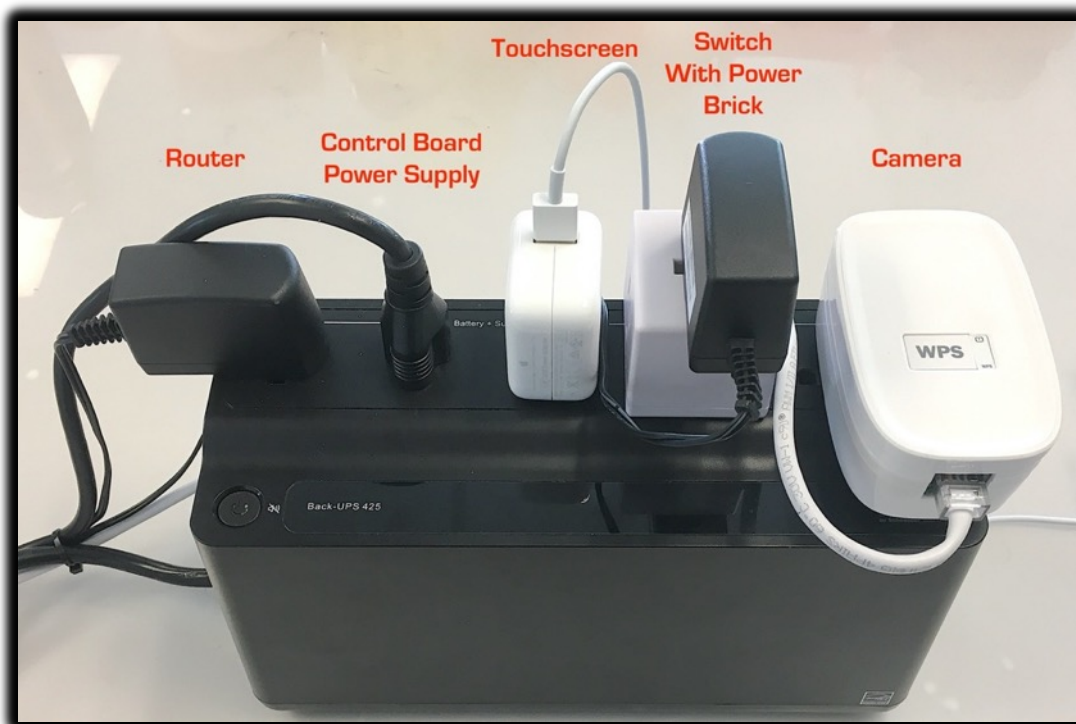
- Camera power supply can now be plugged in inside the control bay locker, using the 15-foot Ethernet cable provided, as shown below.



A single port power pigtail or a multi-port Y-adapter and a power brick may be supplied based on camera count connectivity needs.



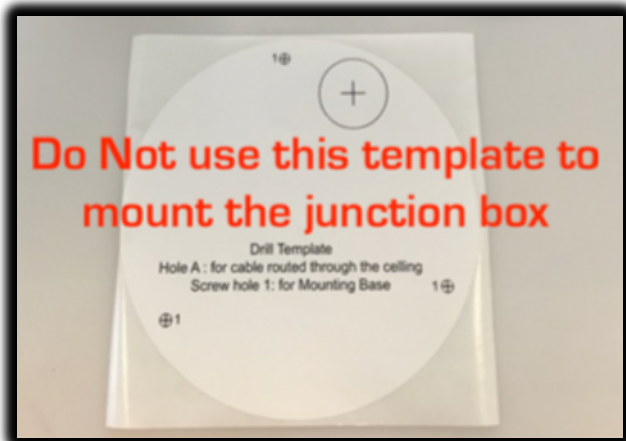
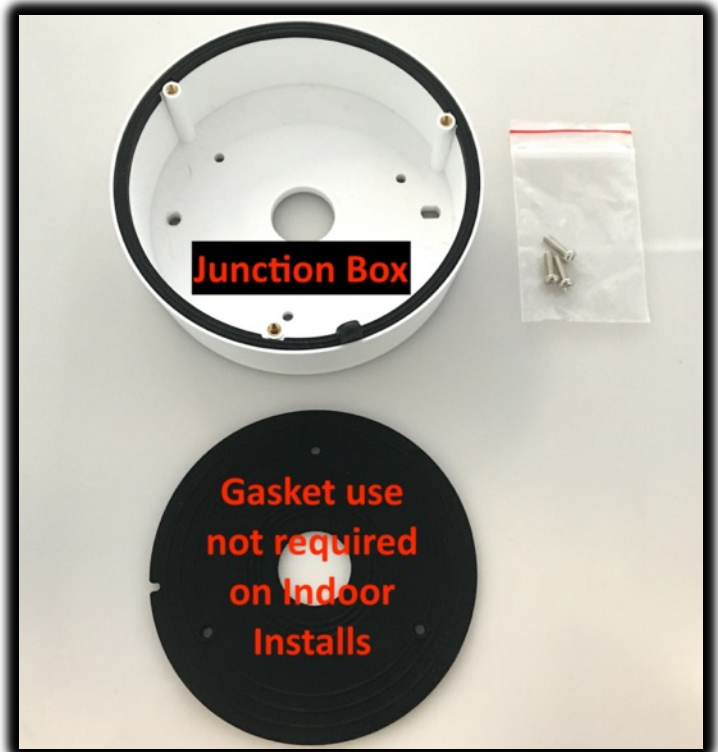
**Note: Camera power supplies must be plugged into the surge only side of the backup battery. For multiple cameras a multi-port Y-adapter will be supplied. The power brick may be supplied for any site that has a Network switch to make room for the camera power adapters.**





**For sites with Power outlet Pre-Wiring for Cameras:**

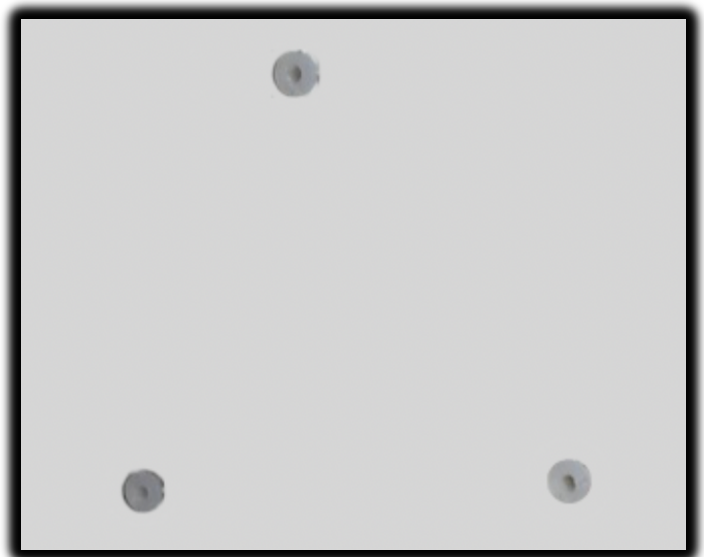
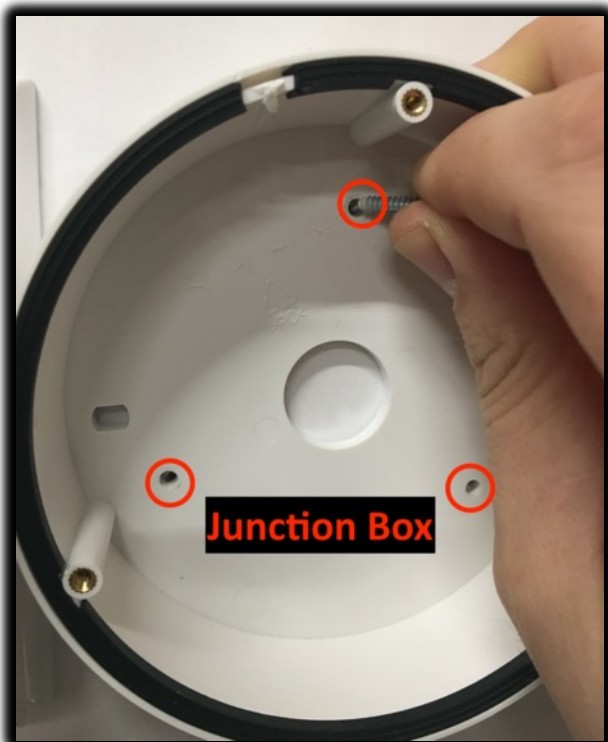
- The junction box will be supplied or can be requested.
- When connecting the camera, the Ethernet coupler can be hidden in this box and the camera base will be mounted to it.
- See the pictures for proper screws and order of assembly.



- You will need to remove the raised tab on the junction box with diagonal or regular pliers. This will provide a clean exit location for the Ethernet cable.



- Use the junction box and a spare screw for marking the anchor holes. **The anchor holes should be marked so that the junction box, when mounted, will be as close to the power outlet as possible.**
- With a ¼ inch drill bit, drill the holes for the anchors and insert the anchors. (Anchors required on hollow wall or concrete surfaces)



- Mount the junction box to the wall, **as close as possible to the outlet**, using the screws provided with the anchors.



- Separate the camera base from the dome using the provided T10 Torx wrench.



- Once separated plug the 12-inch Ethernet cable into the cameras Ethernet coupler as shown. Tuck the coupler into the junction box and route the cable out of the opening between the junction box and the camera base.



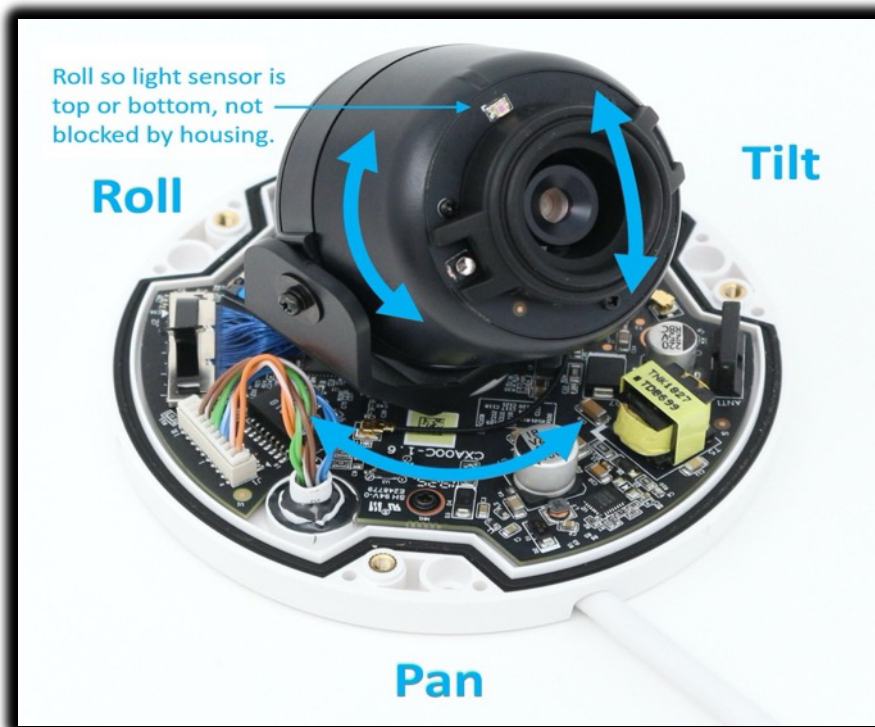
- Use the machine threaded screws to mount the camera base to the junction box. Then replace the dome and tighten the Torx screws with the provided T10 Torx wrench.
- Plug the Ethernet cable into the power supply and then the supply into the outlet.



### Camera View Aiming

Contact support to confirm proper camera aiming: 415-390-0123 x992

- The image module rotates on three axes to aim the view. **(Reminder: This camera is not motorized)**
- If it doesn't seem to move in the direction you want, try rotating all the way around to the other direction. Once aimed, rotate the module to ensure that the image sensor is "level" with the light sensor either on top or bottom, and the IR LEDs to the left and right, as shown below.
- Ensure that the light sensor is not blocked by the white housing when the bubble is fitted over the camera.
- Finally, screw the dome bubble tightly on.

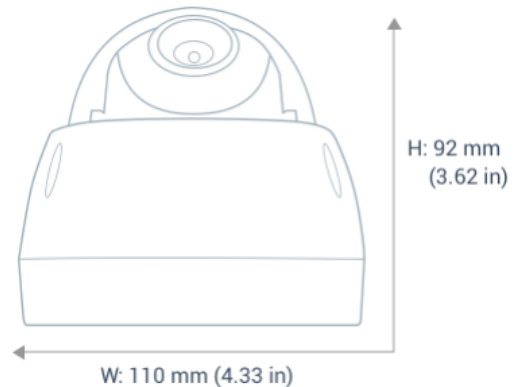


## Camera LED Status:

- Solid Blue: Camera registered and operating normally
- Blinking Blue: Camera waiting to be registered
- 2 Blue [Pause] 2 Blue [Repeat]: Camera does not have Internet connectivity
- 1 Blue [Pause] 1 Green [Repeat]: Connected to Internet and trying to connect to Rhombus

## Camera Spec's

- Image Sensor: 5MP
- Video Capture: 1080p
- Low Light Vision: 150 feet
- Field View: 112°
- Storage: 128GB
- Weather Resistant: IP66 Weatherproof (Indoor/Outdoor)
- The camera will provide solid low-light performance and capture objects from 50 feet away in total darkness



## Step 14: Onsite Demo and Property Management Training

- Make sure you try all the steps below on your own before you show the client.
- Start by using Luxer One's carrier code (4152557500) to initiate a delivery. Demonstrate to management that a resident can be looked up by their name or unit number.
- Have them do a delivery so they are confident with the system and understand how to take a picture.
- After deliveries have been made, show how the Luxer One Manager Interface works.
- Provide management with their unique Manager Interface pin and ensure they understand the need to protect and restrict access to this.
- Locker Interior Access:
  - Through Interface:
    - ✧ Property management can gain access to any locker through the Manager Interface without accessing the manual lever override. Demonstrate access to the Manager's Interface and how to open the "Screen" door and any other door.
    - ✧ Demonstrate that the "Screen" door will need a slight tug when the open-door command is triggered.
    - ✧ Show the open all lockers button and let them know they will use that for audits. (Do not demonstrate by opening All lockers)
    - ✧ Once complete explain that they must exit the Manager Interface to prevent the next person from gaining full access to all locker doors. The system will time out after 5 minutes and revert to the main page.
  - Manual Lever:
    - ✧ Show how to access manual door operation lever.
    - ✧ Provide the site with their unique Cam lock Code and ensure they understand how this code must be kept confidential.
    - ✧ The locks can sometimes be tight. Make sure to show that the Cam needs to be perfectly aligned to adjust the numbers.